



## Aeon Battery

A48-40

Take charge of your energy. Zenaji's Aeon Battery provides an economically viable lifetime solution for your home energy storage.

*Cutting edge battery delivering market-leading technology and economic savings*

The Aeon Battery offers the most **robust, safest, longest life** and most **cost effective** solution available today. With a **no frills** design, the Aeon Battery is **easy** to install and can be **expanded** in the future to provide you with peace of mind in your storage **investment**.

### Lifetime Solution

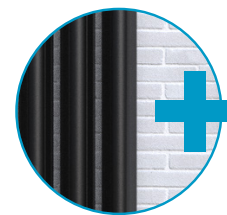
The Aeon battery lasts for 22,000 cycles, and has a tough weatherproof aluminium case providing a lifetime energy storage solution.

### Superior Performance

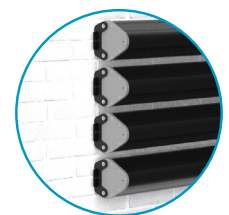
Each Aeon Battery provides 1.93kWh of energy storage. Superior cycling performance allows 3 cycles a day to take full advantage of your energy production and off peak energy pricing plan.

### Smart Design

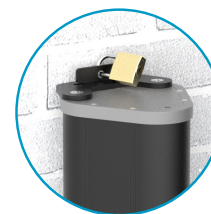
Simple inside or outside installation, easily mounted on a wall, with a space efficient design and modern aesthetics (comes with mounting brackets)



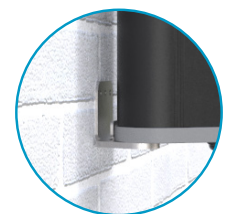
Easy system Expansion



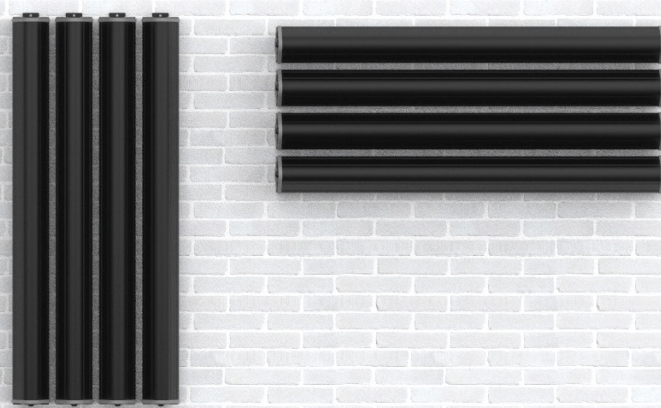
Horizontal mount



Simple lock security



Vertical mount



## Specification

Nominal Capacity (25°C ± 5°C) (Useable Capacity)

Chemistry

Dimensions (Height x Width x Depth)

Nominal Voltage

Bulk Stage Voltage / Current\*

Absorption Stage Voltage / Current\*

Float Voltage\*

High Cut-off Voltage

Discharge Cut-off Voltage (Low Cut-off Voltage)

Low Restart Voltage (Reconnect Voltage)\*

Mass

Rated DC Charge/Discharge Current (25°C ± 5°C)

Rated DC Charge/Discharge Power (25°C ± 5°C)

Max DC Charge/Discharge Current (10s, 25°C ± 5°C)

Max DC Charge/Discharge Power (10s, 25°C ± 5°C)

Battery Management System

Isolation & Distribution Block Requirement

Battery Short Circuit Current

Operating Temperature

Storage Temperature

Cycle Life (1C, 25°C ± 5°C)

Depth of Discharge

Round Trip Efficiency (1C, 25°C ± 5°C)

Ingress Rating

Installation

Connections

Warranty

## A48-40

1.93KWh (40Ah)

Lithium Titanate (LTO)

1635 x 155 x 145 mm

48.0V

53.8V / 20A

55.4V / 8A

53.8V / 4A

56.0V

42.5V

45.6V

If only one Bulk/Absorption stage available, use Absorption settings

**round down** to closest number when inverter setting isn't as precise

**round up** to closest number when inverter setting isn't as precise

36kg

50A (1.25C) continuous DC, 38A (0.95C) pulsed DC\*\*

2415W continuous DC, 1835W pulsed DC\*\*

120A (3C)

5796W

Internal cell balancing, failure detection and trip. Under-Voltage, Over-Voltage, Over-Current, Over-Temp, Under-Temp protection and trip

50A per battery connected in parallel

1700A

-40°C to 60°C (recommended 5°C to 35°C)

-5°C to 35°C

22,000

100%

96%

IP65

Indoors or outdoors

6mm<sup>2</sup> (10 AWG) (Ø2.8mm) wire per pole

20 Years or 22,000 cycles, whichever comes first, see warranty document for details

\*common two or three stage charge and discharge settings. For specific inverter settings, please contact Zenaji.

\*\*most inverters supply pulsed Direct Current, not continuous Direct Current

For information on compatible inverters, chargers and charge parameters please visit [www.zenaji.com](http://www.zenaji.com)

Zenaji Pty. Ltd. | 2 Shearson Cres, Mentone, 3194 | Australia

Australia: [ben@zenaji.com](mailto:ben@zenaji.com) | +61 448 818 857

International: [info@zenaji.com](mailto:info@zenaji.com) | +61 418 104 496

[www.zenaji.com](http://www.zenaji.com)

All product, service and technical data described subject to change without notice

A48-40 Spec Sheet | ZEN-012 | V4.4 | 15 DEC 2021

